



Research Kits

ICN's broad range of research kits simplify your efforts and save you time. Since they include the reagents necessary for specific assays or commonly performed procedures, they offer better value and added convenience over buying and mixing individual components.

Aurora™ Chemiluminescence Kits

- Non-radioactive
- Versatile
- Superior sensitivity
- Rapid results

The Aurora™ Chemiluminescence based detection systems provide a safe and efficient alternative to radiochemicals. These systems utilize StarLight™, a unique dioxetane-based substrate resulting in high sensitivity, easy step-by-step instructions, better reaction times, and superior results. Aurora™ kits are available for western blotting, southern blotting and reporter gene assays.

Aurora™ Western Blot Kits

These protein detection systems offer high sensitivity, rapid film exposures and superior band resolution. They are compatible with nylon, nitrocellulose or PVDF membranes (standard size 10 x 10 cm). The prolonged light emission following incubation allows for multiple film exposures. Detection may be as little as 3.6 picogram of protein. Each of the four kit versions contain enough components for the indicated number of blots.

Kit Contents: StarLight™ Chemiluminescence Substrate, Secondary Antibody, Aurora™ Blocking Reagent, Opti-Membrane™ Blocking Reagent, Diethanolamine, Protocol Booklet.

Goat, Anti-Rabbit IgG

821538	10 blots
821539	30 blots

Goat, Anti-Mouse IgG/IgM

821536	10 blots
821537	30 blots

Goat, Anti-Human IgG

821540	10 blots
821541	30 blots

Goat, Anti-Rat IgG/IgM

821542	10 blots
821543	30 blots

StarLight™ Chemiluminescence Substrate

A dioxetane substrate specially suited for alkaline phosphatase based assays. It is supplied as a 25 mM concentrate. The recommended dilution is 100X for membrane based assays and 60X for solution based assays.

821544	0.5 ml
821561	2.5 ml

Opti-Membrane™ Reagent

Enhances the signal for both nitrocellulose and PVDF membranes allowing for shorter exposure times, greater signal intensity and better sensitivity.

821549	20 ml
--------	-------

Aurora™ Blocking Reagent

A highly purified casein based blocking reagent specially prepared for optimal signal-to-noise performance with StarLight™. It is virtually biotin-free.

821548	30 g
--------	------



Aurora™ Southern Blot Kit

The Aurora™ Southern Blot system offers high sensitivity and versatility for the detection of biotinylated nucleic acids in Southern and Northern blots. The StarLight™ high performance chemiluminescence substrate, along with ActiBind™-AP (streptavidin-AP conjugate) provide maximum signal intensity and low background results. As little as one picogram of hybridized DNA and even sub-picogram quantities of biotinylated DNA bound to the membrane have been detected. Exposures require less than 1 hour for either X-ray or instant film. Each kit is supplied with enough reagents for the minimum number of blots indicated.

Kit Contents: StarLight™ Chemiluminescence Substrate, ActiBind™-AP Conjugate, Aurora™ Blocking Reagent, Diethanolamine, Protocol Booklet. Note: biotinylated probes are not included.

821559	10 blot
821560	50 blot

Aurora™ Chemiluminescence Reporter Gene Assays

Today, reporter gene assays serve as powerful indicators of gene expression. Their results reveal the effectiveness of gene manipulations and insight into the finest gene regulations. Additionally, they serve as monitors of gene therapy experiments and assess the efficacy of drugs and other treatments.

Commonly used reporter gene systems encode chloramphenicol acetyl transferase (known as CAT assays) and β -galactosidase (β -GAL). Both of these reporter gene products can only be measured in cell extracts. ICN offers the traditional β -GAL system for chemiluminescence detection, as well as a mammalian and plant β -glucuronidase system and a novel secreted alkaline phosphatase or SEAP system. They offer wide dynamic ranges reducing the number of serial dilutions saving time and effort. Typically, the reaction is performed directly in a luminometer cuvette and the chemiluminescence is measured using a luminometer. Alternatively, a liquid scintillation counter may be used to measure the light emission.

Aurora™ AP

Secreted alkaline phosphatase (SEAP) continues to gain popularity as an alternative to classical systems. The gene product, a secreted protein, can be directly measured in the culture medium without disrupting the growing cells, a major advantage over traditional systems. This permits monitoring of the same cell culture over a period of time. Furthermore, the SEAP system allows a wider study of functional processes such as post-translational glycosylation and mechanisms of protein secretion. With a detection limit <10 femtograms, the Aurora™ AP assay is 3X more sensitive than the isotopic CAT assay and rivals the sensitivity of luciferase.

Kit Contents: Chemiluminescence Substrate, 5X Dilution Buffer, Reaction Buffer Diluent, Assay Buffer, Positive Control, Protocol Booklet.

Ref.: 1. Berger, J.J., et al., *Gene*, **66**:1-10 (1988). 2. Cullen, B.R. and Malim, M., *Methods in Enzymology*, **216**:362-368 (1992).

3131000	200 assays
3132000	600 assays

Aurora™ AP Reporter Vectors

3131010	Basic Vector	20 μ g
3131020	Promoter Vector	20 μ g
3131030	Enhancer Vector	20 μ g
3131040	Control Vector	20 μ g

Aurora™ Gus, Mammalian and Plant

These kits are designed for the quantitative detection of bacterial β -glucuronidase. They are up to 100X more sensitive than the equivalent fluorescent assays incorporating MUG (4-methylumbelliferyl- β -D-glucuronide). Unlike MUG, Aurora™ Gus is not affected by fluorogenic compounds found in plant material and is not subjected to disturbing quenching effects at high protein levels. The dynamic range of the assay, covering 6 orders of magnitude, cannot be rivaled by either colorimetric or fluorescent methods. It is ideal for the normalization of transfection efficiencies with the luciferase reporter. Both assays can be performed on the same instrument.

Kit Contents: Chemiluminescence Substrate, Gus-Reaction Buffer Diluent, Lysis Solution, Light Emission Accelerator, Protocol Booklet.

Ref.: Martin, T., et al., *GUS protocols*, pp. 23-43 (1992).

3143000	Mammalian	200 assays
3144000		600 assays
3141000	Plant	200 assays
3142000		600 assays

Aurora™ Gus Reaction Buffer Diluent

A ready-to-use premix of Reaction Buffer Diluent and Chemiluminescence Substrate for use with the Aurora™ Gus system.

3142005	120 ml
---------	--------



Aurora™ Gal-XE

This system is designed for the rapid, ultra-sensitive detection of β -galactosidase in cell extracts. The assay offers >1000X higher sensitivity than equivalent colorimetric assays employing ONPG (o-nitrophenyl- β -D-galactoside) and up to 3X greater sensitivity to both isotopic and non-isotopic CAT assays. As little as 2 femtograms of enzyme can be detected. It is ideal for the detection of weak expression and for transfection normalization with other sensitive reporter assays such as luciferase. Moreover, the simplicity, sensitivity and wide dynamic range of Aurora™ Gal-XE enable rapid optimization of transfection conditions.

Kit Contents: Chemiluminescence Substrate, Galacto-Reaction Buffer Diluent, Lysis Solution, Light Emission Accelerator, Protocol Booklet.

Ref.: 1. Alam, J. and Cook, J.L., *Anal. Biochem.*, **188**:245-254 (1990). 2. Jain, V.K. and Magrath, I.T., *Anal. Biochem.*, **199**:119-124 (1991).

3121000	200 assays
3122000	600 assays

Aurora™ Gal-XE Vectors

3121010	Basic Vector	20 μ g
3121020	Promoter Vector	20 μ g
3121030	Enhancer Vector	20 μ g
3121040	Control Vector	20 μ g

Aurora™ Gal-XE Reaction Buffer Diluent

A ready-to-use premix of Reaction Buffer Diluent and Chemiluminescence Substrate for use with the Aurora™ Gal-XE system.

3122005	120 ml
---------	--------

Aurora™ Accelerator

For use with Aurora™ Gal-XE and Aurora™ Gus systems.

3142003	210 ml
---------	--------



Research Kits

Chromatography Kits

Frequently, the chromatographer is confronted with a new, unusual or difficult separation for which there is no previous experience. In such cases, it is often a matter of "guesswork" to find the best adsorbent to achieve optimum results. It can be disconcerting to purchase a substantial quantity of an expensive adsorbent, only to find out it does not perform adequately in your specific system.

Recognizing this adsorbent-choice dilemma, ICN offers a simple solution. ICN Chromatokits™ are specially designed to allow the chromatographer sample quantities for small-scale trial separations. The chromatographer can determine exactly which adsorbent best suits the requirements of the separation system and then confidently order the correct adsorbent in larger quantities. Chromatokits™ are convenient, easy-to-use, and economical.

CATALOG
NUMBER

410000 RT	ICN ALUMINA CHROMATOKIT Contains 250 g of each of the following Aluminas for preparative and classic column chromatography: Alumina, Basic, Act. I Alumina, Neutral, Act. I Alumina, Acid, Act. I Alumina, Basic, Act. Super I Alumina, Neutral, Act. Super I Alumina, Acid, Act. Super I	1 kit
--------------	---	-------

410001 RT	ICN SILICA CHROMATOKIT™ Contains 250 gm of each of the following Silica Gels for preparative and classic column chromatography. 04666 Silica 0-63 02824 Silica 32-63 02758 Silica 32-100 04641 Silica 63-100 04662 Silica 63-200 02760 Silica 100-200 02811 Silica 200-500	1 Kit
--------------	---	-------

410002 RT	ICN ACTIVATED SILICA CHROMATOKIT™ Contains 250 gm of each of the following Activated Silica Gels for preparative and classic column chromatography. 02750 Silica 32-63, Active 02766 Silica 32-100, Active 02767 Silica 63-100, Active 02769 Silica 63-200, Active 02747 Silica 100-200, Active 02770 Silica 200-500, Active	1 Kit
--------------	--	-------

410003 RT	ICN ALUMINA TLC CHROMATOKIT™ Contains 500 gm of each of the following Aluminas for Thin-Layer chromatography. 04346 Alumina A-TLC 04340 Alumina B-TLC 04343 Alumina N-TLC 04409 Alumina G-TLC	1 Kit
--------------	---	-------

CATALOG
NUMBER

410004 RT	ICN SILICA TLC CHROMATOKIT™ Contains 250 gm of each of the following Silica Gels for Thin-Layer Chromatography. 04642 Silica TLC 04643 Silica F-TLC 04644 Silica G-TLC 04645 Silica GF-TLC	1 Kit
--------------	--	-------

410005 RT	ICN CATION EXCHANGE CHROMATOKIT The following kit contains 100 g of each of the listed Amberlite® resins. CG-50(H): weakly acidic resin, carboxylic functionality, 200-400 mesh. DP-1: weakly acidic gel, sodium form, carboxylic functionality. IR-116 (Na): strongly acidic gel, sulfonic acid functionality. 252 (Na): strongly acidic macroreticular, sulfonic acid functionality. IRC-50 (H): weakly acidic macroreticular, carboxylic functionality.	Each
--------------	--	------

410006 RT	ICN ANION EXCHANGE CHROMATOKIT The following kit contains 100 g of each of the listed Amberlite® resins. IRA-35: weakly basic macroreticular, polystyrene polyamine functionality, free base. IRA-47: weakly basic gel, polyamine functionality, hydrochloride form. IRA-68: weakly basic gel selective for ion exchange resins, polyamine functionality. IRA-93: weakly basic macroreticular, polystyrene polyamine functionality, free base. IRA-402 (OH): strongly basic gel, quaternary ammonium functionality. IRA-900 (Cl): strongly basic macroreticular, quaternary ammonium functionality.	each
--------------	---	------

410007 RT	ICN CHROMATOKIT For Enzyme Purification This kit contains 50 g of each of the following adsorbents. Alumina C: prepared per <i>Methods in Enzymology, Vol. 1</i> for enzyme purification. Calcium Phosphate Gel: prepared per <i>Methods in Enzymol., Vol. 1</i> and aged. ICN Alumina N, Super I: neutral. ICN Alumina N, Act. I: neutral. ICN Alumina, Act. II-III: prepared according to Brockmann for column chromatography. ICN Silica, 100/200: 60 angstrom pore size.	Each
--------------	---	------

Research Kits

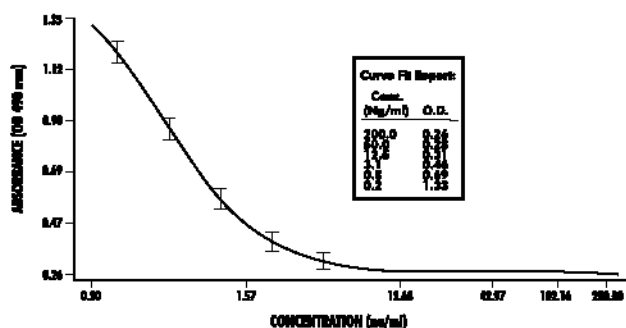
ELISA, RID, and Related Detection Systems

ELISA-Kine Plus™ Kits

- **High sensitivity** — detects nanogram quantities of cytokine that conventional assays miss and provides enhanced opportunities for clinical correlation.
- **Flexible** — optimized use for serum, plasma, saliva, all other biological fluids and cell culture testing.
- **Simple** — provided in a standard, uniform format with 3 hour incubation throughout entire product line.
- **High specificity** — tested for cross-reactivity against WHO cytokine standards.
- **Added value** — 192 determinations in standard 96 well format (twice as many as conventional assays).
- **Validation** — assured reliability of detection by parallelism and quantitative recovery studies.
- **Predictive relevancy** — accurate measurement of LPS and superantigen cytokine induction.
- **Versatile** — can be used in correlation with conventional assays for "free" and "bound" cytokine level comparison or can be used alone.

ICN's ELISA-Kine Plus™ system is a unique, polyclonal-based "competitive" enzyme immunoassay designed to measure the TOTAL (bound and non-bound) cytokine levels in serum, plasma, CSF, saliva and other biological fluids. Conventional assays measure "free" cytokine levels and typically "miss" those bound by soluble receptors, auto-antibodies and binding proteins. The ELISA-Kine Plus™ assay system is not hindered by these factors causing interference or "masking." Additionally, it offers sensitivity in the nanogram range and will accurately measure cytokine concentration in cell or tissue cultures providing the concentration in cell or tissue cultures provided the concentration is within the dynamic range of the assay (for cell culture assays requiring high sensitivity in the picogram range, the ELISA-Kine assay system is recommended).

ELISA-KinePlus™ human IL-1 α Standard Curve:



Specifications of ELISA-KINE Plus™ Human IL-1 α

Determinations:	192
Number of Samples:	82 in duplicate
Sensitivity:	0.195 ng/ml
Detection Range:	0.195 ng/ml to 200 ng/ml
Intra-assay Variation:	± 5.9%
Inter-assay Variation:	± 10.2%
Cross-reactivity:	No crossreactivity with WHO standards
Validation:	Parallelism and quantitative recovery
Sample Matrix:	Serum, plasma, CSF, saliva, culture media, other fluids
Assay Time:	4 hours
Storage:	4°C
Assay Temperature:	Room Temperature

ELISA-Kine Plus™ Assays

Catalog No.	Assay	Plates
3230000	Human IL-1 α	2x96
3230200	Human IL-1 β	2x96
3230300	Human IL-2	2x96
3230400	Human IL-3	2x96
3230500	Human IL-4	2x96
3230600	Human IL-6	2x96
3230700	Human IL-7	2x96
3230800	Human IL-8	2x96
3230900	Human IL-10	2x96
3231000	Human IL-13	2x96
3231800	Human EGF	2x96
3231700	Human FGF basic	2x96
3231100	Human GM-CSF	2x96
3231400	Human Interferon- α	2x96
3231500	Human MIP- α	2x96
3231200	Human TNF- α	2x96
3231300	Human TNF- β	2x96
3231600	Human VEGF	2x96
3230100	Mouse IL-1 α	2x96
3231900	Mouse IL-1 β	2x96
3232000	Mouse IL-3	2x96
3232100	Mouse IL-6	2x96
3232200	Mouse GM-CSF	2x96
3232300	Mouse TNF- β	2x96

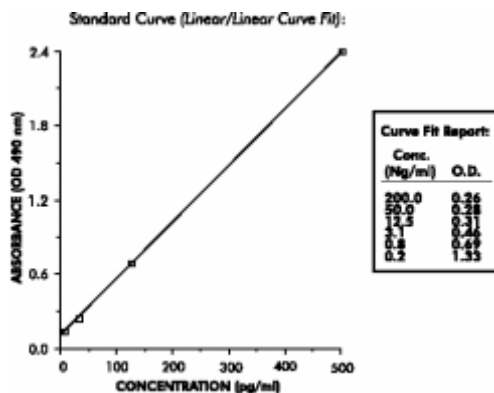


Research Kits

ELISA-KINE™ Kits

- **Excellent sensitivity:** level of detection often lower than 1 picogram per milliliter.
- **Greater efficiency:** 192 determinations - double of most currently used kits.
- **Flexible:** recommended for cell culture, but may be used for serum, plasma or other biological fluid samples.
- **Easy-to-use:** uniform, 3 hour incubation and standard protocol for all kits.
- **Validation:** parallelism and quantitative recovery studies to assure reliability.
- **Complete linearity:** no skewed results throughout the entire dynamic range and at the extremes.
- **Predictive relevancy:** accurate detection during LPS and superantigen cytokine induction verifies the biological relevance of measurement.
- **High specificity:** no detectable cross-reactivity against WHO cytokine standards.
- **Versatile:** may be used with ICN's ELISA-Kine Plus™ immunoassays allowing direct comparison of "free" and "bound" cytokine levels within a sample.

ICN's ELISA-Kine™ system is a conventional monoclonal/polyclonal-based sandwich enzyme immunoassay (EIA) for the sensitive detection of natural or recombinant cytokine levels in cell culture extracts and other biological fluids. This system uses a unique, two-step color generating procedure ensuring superior signal amplification for maximum sensitivity. Alkaline phosphatase dephosphorylates NADPH (the substrate) to NADH. This product then serves as the cofactor activating a cycling redox reaction driven by alcohol dehydrogenase and diaphorase.



Specifications of ELISA-Kine™ Human IL-2

Determinations:	192
Number of Samples:	86 in duplicate
Assay Time:	4 hours
Dynamic Range:	8.0 to 500 pg/ml
Sensitivity:	1.10 pg/ml (zero standard mean OD + 2SD)
Sample Volume:	50-100 µl
Intra-assay Variation:	± 7.0%
Inter-assay Variation:	± 10.6%
Cross-reactivity:	No cross-reactivity with WHO standards
Validation:	Parallelism and quantitative recovery
Sample Matrix:	Cell culture supernatants and biological fluids
Assay Temperature:	Room Temperature
Storage:	4°C

Each kit follows virtually the identical protocol, eliminating variation and the need to learn several different procedures. Additionally, this provides greater likelihood for optimal results with every assay.

Murine monoclonal antibodies developed against specific cytokines capture cytokine from the sample in a 3 hour incubation. Rabbit, anti-cytokine antibodies then detect the presence of the captured cytokine. Next, the addition of goat, anti-rabbit-AP secondary antibody, followed by substrate and amplifier, provides the basis for the consistent and sensitive detection system. Detection occurs through a rapidly developing deep red product (formazan) which absorbs light at 492 nm. The resulting "curve" is completely linear throughout the entire assay range illustrating a "direct" relationship between optical density (OD) and cytokine concentration.

ELISA-Kine™ Assays

Catalog No.	Assay	Quantity
3233000	Human IL-1α	2x96
3233100	Human IL-1β	2x96
3233200	Human IL-2	2x96
3233300	Human IL-4	2x96
3233400	Human IL-5	2x96
3233500	Human IL-6	2x96
3233600	Human IL-10	2x96
3234100	Human IL-15	2x96
3233700	Human GM-CSF	2x96
3233800	Human TNF-α	2x96
3233900	Human Interferon-γ	2x96
3234000	Human Rantes	2x96

Biogenic Amine Assays

The catecholamines adrenaline, noradrenaline and dopamine, and their metabolites metanephrine and normetanephrine are part of an important group of neurochemicals commonly called biogenic amines. Also included in this group of products are histamine, serotonin and 5-hydroxy-3-indole acetic acid. These biogenic amines play significant roles in regulating bodily functions, signal transduction, neurotransmission, cell-cell interactions, and secretion of hormones. As a result of the numerous and important roles these biogenic amines play, they are of great interest in the area of neuroscience research.

Historically, measurement of the levels of biogenic amines present in biological systems and fluids had been a problem because of a lack of convenient, accurate assays.

Today, ICN offers immunoassays for routine measurement of biogenic amines. The determination of metabolites such as metanephrines, histamine, histamine release, serotonin, melatonin and 5-HIAA in serum and urine samples is easy to perform in the routine laboratory. All assays show an excellent correlation to HPLC or GC/MS. For complete details, please request for a copy of our Biogenic Amine Assays data sheet.

CATALOG NUMBER

193589 0-5°C	ADRENALINE ELISA KIT This adrenaline ELISA kit provides materials for the quantitative measurement of chemically derivatized adrenaline in urine. The assay procedure follows the basic principle of competitive ELISA whereby there is competition between a biotinylated and non-biotinylated antigen for a fixed number of antibody binding sites. The kit is a 12 x 8 well format.	1 each
<i>FOR RESEARCH USE ONLY!</i>		
193590 0-5°C	HISTAMINE ELISA KIT This Histamine ELISA kit provides materials for the quantitative measurement of acylated histamine in plasma, urine, and cell culture supernatants. The assay procedure follows the basic principle of competitive ELISA whereby there is competition between biotinylated and non-biotinylated antigen for a fixed number of antibody binding sites. The kit is a 12 x 8 well format.	1 each
<i>FOR RESEARCH USE ONLY!</i>		
193591 0-5°C	HISTAMINE RELEASE ASSAY KIT This assay measures the release of histamine which occurs upon stimulation of basophilic granulocytes depending upon their sensitivity to an allergen. Heparinized whole blood samples are incubated with different concentrations of the suspected allergen. The released histamine in the supernatant is subsequently determined using a specific plasma immunoassay, such as the Histamine ELISA Kit (Cat. No. 193590) from ICN. The kit contains sufficient materials for 96 assays when used in connection with the Histamine ELISA kit.	1 each
<i>FOR RESEARCH USE ONLY!</i>		
193592 0-5°C	5-HYDROXY-3-INDOLE ACETIC ACID ELISA KIT (5-HIAA ELISA) This 5-HIAA enzyme immunoassay kit provides materials for the quantitative measurement of chemically derivatized 5-HIAA in urine, serum, plasma, tissue homogenates, and cell culture supernatants. The assay procedure follows the basic principle of competitive ELISA, whereby there is competition between biotinylated and non-biotinylated antigen for a fixed number of antibody binding sites. This kit is a 12 x 8 format.	1 each
<i>FOR RESEARCH USE ONLY!</i>		

CATALOG NUMBER

193596 0-5°C	MELATONIN ELISA KIT The Melatonin ELISA is a competitive enzyme immunoassay for the quantitative determination of melatonin in serum without extraction. For melatonin measurement in serum, the samples are treated enzymatically to free the antigen from its binding proteins. The assay procedure follows the basic principle of competitive ELISA whereby there is competition between a biotinylated and non-biotinylated antigen for a fixed number of antibody binding sites. The kit is a 12 x 8 well format.	1 each
<i>FOR RESEARCH USE ONLY!</i>		
193597 0-5°C	MELATONIN SULFATE ELISA KIT (6-Sulfatoxymelatonin ELISA) The 6-Sulfatoxymelatonin ELISA kit provides materials for the quantitative measurement of melatonin sulfate in urine. The assay procedure follows the basic principle of competitive ELISA: the competition between melatonin sulfate conjugated to horseradish peroxidase and melatonin sulfate in the sample for a fixed number of antibody binding sites. The kit is a 12 x 8 well format.	1 each
<i>FOR RESEARCH USE ONLY!</i>		
193593 0-5°C	METANEPHRINE ELISA KIT This metanephrine ELISA kit provides materials for the quantitative measurement of chemically derivatized metanephrine in urine. The assay procedure follows the basic principle of competitive ELISA whereby there is competition between a biotinylated and non-biotinylated antigen for a fixed number of antibody binding sites. The kit is a 12 x 8 well format.	1 each
<i>FOR RESEARCH USE ONLY!</i>		
193594 0-5°C	NORADRENALINE ELISA KIT This noradrenaline ELISA kit provides materials for the quantitative measurement of chemically derivatized noradrenaline in urine. The assay procedure follows the basic principle of competitive ELISA whereby there is competition between a biotinylated and non-biotinylated antigen for a fixed number of antibody binding sites. The kit is a 12 x 8 well format.	1 each
<i>FOR RESEARCH USE ONLY!</i>		
193598 0-5°C	SEROTONIN ELISA KIT This Serotonin ELISA kit provides materials for the quantitative determination of chemically derived serotonin in serum, plasma, urine, tissue homogenates, and cell culture supernatants. The assay procedure follows the basic principle of competitive ELISA whereby there is competition between a biotinylated and non-biotinylated antigen for a fixed number of antibody binding sites. The kit is a 12 x 8 format.	1 each
<i>FOR RESEARCH USE ONLY!</i>		
193599 0-5°C	sCD14 ELISA KIT The sCD14 kit is a sandwich enzyme immunoassay for the determination of soluble CD14 in human serum, plasma, liquor, synovial fluid, urine, and cell culture supernatants. An anti-CD14 oligoclonal antibody is adsorbed to polystyrene microtiter wells. Soluble CD14 present in the sample or the standard binds to the antibodies on the coated well. A biotinylated anti-CD14 monoclonal antibody directed against another epitope on the CD14 molecule is simultaneously added. After washing, a streptavidin peroxidase conjugate binds to the bound complex, completing the sandwich. Unbound conjugate is removed by washing, and the substrate solution is added to the wells. A colored product is formed in proportion to the amount of CD14 present in the sample. The kit is a 12 x 8 format.	1 each
<i>FOR RESEARCH USE ONLY!</i>		



Research Kits

ImmMark™ MycoTest™

- Rapid Mycoplasma Detection
- Direct Testing
- High Specificity
- Fluorescent Labeling
- Superior Resolution

ICN's ImmMark™ MycoTest™ monoclonal based immunoassay detects a broad range of mycoplasma species including *A. laidlawii*, *M. hyrorrhinis*, *M. arginini*, *M. orale*, and *M. salivarium* accounting for more than 96% of all cell culture infections. The fluorochrome-labeled secondary antibody offers extremely sensitive detection, staining only mycoplasma and not bacteria or cells.

Kit Contents: 2 ml purified Anti-CCM-2-FLUOS monoclonal antibody in a protein stabilized buffer with Evans blue counterstain, 2 ml goat, anti-mouse IgG-FITC secondary antibody in a protein buffer with Evans blue counterstain, 2.5 ml of Mounting Fluid and protocol details.

MycoTest™

Mycoplasma appear as a bright green fluorescence on a red background. The versatility of the kit permits two protocols to follow: a one step assay or a two step assay. There are 50 tests per each kit.

3020000 1 kit

Apo-Tek Apo E™ ELISA Kit

This monoclonal based enzyme immunoassay quantitatively detects human apolipoprotein E in serum, plasma, CSF and cell culture supernatant. It will detect both "free" and "bound" protein with the same relative affinity. Treatment with Tween 20 or guanidine HCl to "unmask" or expose lipid inhibiting epitopes is not necessary. This kit may be used on fresh or frozen samples. It is supplied with enough reagent for 96 assays. **For Research Purposes Only.**

59718 96 assays

CAT ELISA Kit

ICN's chloramphenicol acetyltransferase enzyme immunoassay is based on the sandwich principle. It detects expressed protein in the picogram range in just a few hours. CAT is a bacterial enzyme most commonly used as a marker to measure promoter activity during transient expression of DNA constructs transfected into mammalian cells. The fusion of CAT with eukaryotic gene promoters to assess or regulate transcription and expression is a common technique. This microplate based kit is supplied ready-to-use.

830111 20 assays
830112 60 assays

ImmMark™ Lymphoma Identification Kit

ICN's lymphoma identification kit incorporates the panel of monoclonal antibodies LN-1, LN-2, and LN-3 with ICN's streptavidin-biotin peroxidase immunostaining method for a complete staining kit. The primary monoclonal antibodies and the streptavidin-biotin/HRP conjugate system are specifically matched to provide maximum detection and minimum background in critical tissue samples. The kit also includes antibody control. Each monoclonal antibody is available separately. Please contact ICN Customer Service for ordering information.

689401 1 kit

ImmMark™ Universal Western Blot Systems

ICN's universal western blot detection kits provide easy labeling of mouse and rabbit primary antibodies in western blots. The streptavidin-biotin amplification method is employed with either AP or HRP label to stain and detect the primary antibodies. Experts at ICN have matched protocol and components to provide a highly sensitive, yet versatile, detection system to be used in western blotting.

Kit Contents: Total Protein Stain, Biotinylated Link Antibody, Enzyme Labeled Streptavidin, Enzyme Chromogen, Western Buffer, ImmuBlok™ Blocking Agent, Biotrans™ PVDF Membranes (15 x 15 cm), Detailed Instructions. There is enough components for 2 blots.

Anti-Mouse-AP Kit

689061 1 kit

Anti-Mouse-HRP Kit

689361 1 kit

Anti-Rabbit-AP Kit

689071 1 kit

Anti-Rabbit-HRP Kit

689371 1 kit

Anti-Mouse Link Antibody and AP-Streptavidin Reagent

Same reagents as in Anti-Mouse-AP Kit for custom use. For two 20 x 20 cm blots.

689081 1 set

Anti-Mouse Link Antibody and HRP-Streptavidin Reagent

Same reagents as in Anti-Mouse-HRP Kit for custom use. For two 20 x 20 cm blots.

689381 1 set

Anti-Rabbit Link Antibody and AP-Streptavidin Reagent

Same reagents as in Anti-Rabbit-AP Kit for custom use. For two 20 x 20 cm blots.

689091 1 set

Anti-Rabbit Link Antibody and HRP-Streptavidin Reagent

Same reagents as in Anti-Rabbit-HRP Kit for custom use. For two 20 x 20 cm blots.

689391 1 set

ImmMark™ Phosphotyrosine Western Blot Systems

ICN's phosphotyrosine kits combine ICN's superior monoclonal PY20 antibody with all the necessary reagents for easy, one-step detection of phosphorylated tyrosine residues in western blots. ICN's PY20 antibody offers unsurpassed affinity and specificity with proven reliability. For added flexibility, two kit versions are available: ¹²⁵I labeled or HRP conjugated PY20 antibody. Experts at ICN have carefully coordinated the protocol and components for optimal performance. The kits contain enough reagents for five 15 x 15 cm blots.

Kit Contents: Labeled PY20 Monoclonal Antibody, Enzyme Chromogen (HRP system only), Molecular Weight Markers, Positive and Negative Controls, ImmuBlok™ Blocking Agent, Western Buffer, Total Protein Stain, Biotrans™ PVDF Membranes, Detailed Instruction Manual.

ImmMark™ PY20-HRP Detection Kit

689501 1 kit

ImmMark™ PY20-¹²⁵I Detection Kit

689511 1 kit

ImmuMark™ Universal Kits

ICN's basic detection systems are designed for locating and identifying tissue antigens using the streptavidin-biotin immunostaining method in mouse, rabbit or goat systems. For each species, both HRP and AP detection methods are available.

Kit Contents: Ready-to-use Biotinylated Link Antibody with Blocking Reagent, Enzyme-labeled Streptavidin, Complete Instructions.

Universal Mouse Monoclonal AP Kits

689012	150 tests
689011	500 tests

Universal Mouse Monoclonal HRP Kits

689312	150 tests
689311	500 tests

Universal Rabbit Polyclonal AP Kits

689022	150 tests
689021	500 tests

Universal Rabbit Polyclonal HRP Kits

689322	150 tests
689321	500 tests

Universal Goat Polyclonal AP Kits

689032	150 tests
689031	500 tests

Universal Goat Polyclonal HRP Kits

689332	150 tests
689331	500 tests

Universal Combi-Species AP Kit

Essentially a combination of all three systems for greater versatility.

689041	500 tests
--------	-----------

Universal Combi-Species HRP Kit

Essentially a combination of all three systems for greater versatility.

689341	500 tests
--------	-----------

Monoclonal Typing Kits

These kits incorporate the easy-to-use Ouchterlony method with a unique design for determining the immunoglobulin class of mouse or rat monoclonal antibodies derived from cell culture supernatant. They allow detection of antibody at 1-20 µg/ml, a range typical of cell culture supernatant. Antisera have been adsorbed to remove reactivity with FBS proteins and NS-1 cells.

Kit Contents: 4 plates (8 rosettes/plate), 6 sheep antisera (4 IgG subclasses, IgA and IgM, 400 µl each), 300 µl positive control sera. Enough reagent for 32 determinations.

Mouse Typing Kit

646901	32 tests
--------	----------

Rat Typing Kit

646911	32 tests
--------	----------

RID Kits and Accessories

ICN offers a variety of immunodiffusion kits for the quantification of human and animal species IgG subclasses and immunoglobulins. Both monoclonal and polyclonal based systems are available, as well as, many accessories for custom protocols. Some of the advantages include:

- The evaluation of IgG subclasses in relation to immunodeficiency disease.
- The relationship of IgG₄ in non-IgE allergy response.
- The implication of specific subclass deficiency in autoimmune disease and chronic respiratory infections.
- The lack of antibody response to bacterial polysaccharides, and the deficient response to α-toxin protein antigen of staphylococci from combined IgG₂ and IgG₄ deficiency.

Polyclonal Human IgG Subclass RID Kits

Cat. No.	Subclass	Range	Quantity
646741	IgG Combi-Kit		4x17 wells
646701	IgG ₁	150-1500	2x17 wells
646711	IgG ₂	100-1500	2x17 wells
646721	IgG ₃	12-120	2x17 wells
646731	IgG ₄	6-60	2x17 wells

Single Dilution Polyclonal Human IgG Subclass RID Kit

The AccraAssay[®] human subclass kit requires only a single dilution for determining the four IgG subclasses. It eliminates tedious pipetting steps and potential dilution errors. A 1:15 dilution measures all subclasses with the exception of IgG₄ which is measured in neat serum. The provided standard curve compensates for any would be dilution calculations.

647601	4x17 wells
--------	------------

Monoclonal Human IgG and IgA Subclass Kits

Cat. No.	Subclass	Quantity
645901	IgG Combi-Kit	4x17 wells
645911	IgG ₁	2x17 wells
645921	IgG ₂	2x17 wells
645931	IgG ₃	2x17 wells
645941	IgG ₄	2x17 wells
645951	IgA ₁	2x17 wells
645961	IgA ₂	2x17 wells
645891	IgA Combi-Kit	2x17 wells

AccraAssay[®] Human Immunoglobulin RID Kits

ICN's immunoglobulin RID kits are useful for the quantification of human immunoglobulins in serum and other body fluids. One kit contains three plates and four reference sera tested against WHO standards.

Cat. No.	Immunoglobulin	Level	Quantity
613011	IgA	Regular	3x17 wells
613021	IgA	Low	3x17 wells
613031	IgG	Regular	3x17 wells
613041	IgG	Low	3x17 wells
613061	IgM	Low	3x17 wells
613071	IgM	Regular	3x17 wells

Human Protein RID Kits

Cat. No.	Protein	Level	Quantity
646801	Albumin	Low	2x17 wells
646791	Albumin	Regular	2x17 wells

Animal Immunoglobulin and Protein RID Kits

Based on timed single radial immunodiffusion, these kits quantitatively determine animal immunoglobulins and proteins. Each immunodiffusion plate has 17 wells for specimen or reference sera diffusion. The accuracy is within 10%. The application ranges for these kits may be determined by the highest and lowest concentration reference sera. All references are normal sera adjusted to the specified immunoglobulin levels by concentration or dilution. Therefore, other serum proteins may be present at levels other than normal. Most kits require 18-24 hours for quantitation. Mouse and rat IgG subclass kits require approximately 48 hours and IgM may need up to 80 hours. See the kit insert for the appropriate time. The kits are stable for more than one year at 5°C.

Kit Contents: plates, reference sera, instructions.

Cat. No.	Kit Type	Range (mg/L)	Quantity
Bovine:			
644741	IgA	500-4000	3x17 wells
644701	IgG, Low Level	100-1200	3x17 wells
644721	IgG, Regular Level	5000-40000	3x17 wells
644751	IgG ₁ , Regular Level	350-3000	3x17 wells
644711	IgG ₁ , Low Level	50-500	3x17 wells
644761	IgG ₂ , Regular Level	250-2200	3x17 wells
644731	IgM	600-5200	3x17 wells
Dog:			
646271	IgA	220-2000	3x17 wells
646251	IgG	2000-30000	3x17 wells
646261	IgM	120-1700	3x17 wells
Horse:			
644851	IgG	2000-30000	3x17 wells
644861	IgM	120-1700	3x17 wells
Mouse:			
646651	IgA	440-6000	2x17 wells
646121	IgG, Low Level	20-1200	3x17 wells
646151	IgG, Regular Level	1250-10000	3x17 wells
646601	IgG ₁	250-4000	2x17 wells
646611	IgG _{2a}	600-900	2x17 wells
646621	IgG _{2b}	83-1350	2x17 wells
646631	IgG ₃	120-1800	2x17 wells
646661	IgG Combi-Kit		4x17 wells
646641	IgM	55-800	2x17 wells
Rabbit:			
646001	IgG	300-2600	3x17 wells
Rat:			
645991	Albumin	400-4000	3x17 wells
646291	IgA	15-180	2x17 wells
646201	IgG	1550-12500	3x17 wells
646211	IgG ₁	400-6000	3x17 wells
646221	IgG _{2a}	700-10000	2x17 wells
646231	IgG _{2b}	700-10000	2x17 wells
646241	IgG _{2c}	45-700	2x17 wells
646281	IgM	100-1400	2x17 wells
645971	Transferrin	500-5000	3x17 wells

Double Immunodiffusion Discs

Each disc contains a single pattern consisting of a circle of six 5 mm wells around a single 6 mm well. Wells are 8 mm apart from edge to edge. The volume of the 5 mm wells is 15 µl, while the 6 mm well volume is 25 µl. The gel is 3 mm thick, and the composition is 0.9% agarose with borate saline buffer, 0.01% thimerosal and 3% polyethyleneglycol which enhances the formation of precipitin and assay sensitivity. The discs are available with or without trypan blue indicator depending on whether or not on the availability of a "dark field" viewer.

642751	w/o indicator	24/pk
642761	with indicator	24/pk

Double Immunodiffusion Plates

These ready-to-use, pre-poured plates can be used to test 8 samples. Two patterns are available. The Micro-Ouchterlony plates (642771) have 8 antigen wells surrounded by 6 antisera wells. The Ouchterlony plates (642781) have 8 larger antigen wells surrounded by 6 antisera wells and ideally suited for antigens present in very low concentrations. Plus, the larger well allows 75 µl of sample to be transferred at one time.

642771		5/pk
642781		5/pk
642791	Gel-filled, Uncut	5/pk

Quad Immunodiffusion Plates

These plates can be used for double or single radial diffusion procedures. The four quadrant design offers the highest possible flexibility. Four completely separate areas translates into independence in one quadrant without interference. The natural partitions permits preservation of unused portions for future use.

421661		6/pk
--------	--	------

Standard Immunodiffusion Plates

ICN's disposable unfilled plates are intended for both double and single immunodiffusion procedures. Calibrated plates bear three scales formed in the plastic. When used with the Cutter and Template Kit, sample wells fall directly over the scales. Plates are hydrophilic for easy gel pouring and better adherence.

421501	Calibrated	12/pk
421651	Uncalibrated	12/pk

Punch Cutters

421753	3 mm	1 each
421754	4 mm	1 each
421755	5 mm	1 each

Cutter and Template Kit

This easy-to-use kit facilitates the preparation of uniform immunodiffusion plates and ensures the production of symmetrical and straight wells. When used with ICN's immunodiffusion plates, the three rows of wells produced by using template "B" fall directly over the millimeter scales of the calibrated plates.

421751		1 kit
--------	--	-------



Murine Viral ELISA Systems

- High sensitivity.
- Minimal background.
- Proven reliability and reproducibility.

ICN's murine antibody enzyme immunoassay systems rapidly detect viral antibodies in serum. Diluted serum samples and controls are incubated in antigen coated micro-ELISA plates. After washing, a ready-to-use conjugate is applied. Following incubation and washing, the ready-to-use substrate is added forming an emerald green color in positive wells. The absorbance is read at 405 nm using a microwell plate reader. FOR RESEARCH USE ONLY; NOT FOR DIAGNOSTIC APPLICATIONS.

Kit Contents: 2 Microwell ELISA plates with 8-well strips alternately coated with viral and control antigen, 5X Sample diluent concentrate, Ready-to-use liquid conjugate (HRP), 30X Wash solution concentrate, Ready-to-use ABTS Liquid substrate, Stopping solution, Positive and negative control sera, Complete instructions. Each kit contains enough reagent for 96 tests (a maximum of 92 samples).

Cat. No.	Assay Type	Quantity
59696	Ectromelia Virus, Mouse	1 kit
59690	Murine Encephalomyelitis Virus	1 kit
59703	Kilham Rat Virus/H-1 Virus, Mouse	1 kit
59698	Lymphocytic Choriomeningitis Virus, Mouse	1 kit
59692	Mouse Hepatitis Virus	1 kit
59691	Minute Virus of Mice	1 kit
59697	Mycoplasma Pulmonis, Mouse	1 kit
59699	Mycoplasma Pulmonis, Rat	1 kit
59693	Pneumonia Virus of Mice, Mouse	1 kit
59701	Pneumonia Virus of Mice, Rat	1 kit
59694	Reovirus Type 3, Mouse	1 kit
59695	Sendai Virus, Mouse	1 kit
59702	Sendai Virus, Rat	1 kit

Cappel Immunodetection Kits

These research kits are available for either mouse or rabbit primary antibodies in peroxidase immunostaining of fixed cells and tissue sections. The immunoperoxidase detection kits include HRP labeled secondary antibody and all other components required for indirect immunostaining. The biotin-streptavidin detection kits include biotin labeled secondary antibody, HRP-streptavidin conjugate, and all other components required for "Ultra-sensitive" immunostaining.

The antibody conjugates provided are affinity purified directed against mouse or rabbit immunoglobulins. Other reagents in the kits are the DAB substrate, primary antibody diluent, blocking reagent and wash buffer. They are provided in convenient dropper vials and have been selected for optimal detection of antigens in paraffin and frozen tissue sections. There is enough reagent for four, fresh solution stainings of at least 15 slides each.

Cat. No.	Kit Type	Quantity
11380	Immunoperoxidase, Mouse	4x15 tests
11381	Immunoperoxidase, Rabbit	4x15 tests
11382	Biotin-Streptavidin, Mouse	4x15 tests
11383	Biotin-Streptavidin, Rabbit	4x15 tests

Other Immunodetection Kits

CATALOG NUMBER

320251 -20°C	CHONDROITIN SULFATE DETECTION KIT #1 The kit contents include: Chondroitinase ABC Lyase- 5 units Chondroitinase AC II Lyase- 5 units Chondro-4-Sulfatase- 1.6 units Chondro-6-Sulfatase- 2.5 units	1 Kit
320261 -20°C	CHONDROITIN SULFATE DETECTION KIT #2 (ABC+AC) The kit contents include: Chondroitinase ABC Lyase- 2 x 5 units Chondroitinase AC II Lyase- 2 x 5 units	1 Kit
320271 -20°C	STANDARD DISACCHARIDE KIT/CHONDROITIN SULFATE REFERENCE KIT See Standard Disaccharide Kits in the Immunobiologicals section for details.	1 Kit
320281 -20°C	UNSATURATED CHONDRO-DISACCHARIDE REFERENCE KIT See Standard Disaccharide Kits in the Immunobiologicals section for details.	1 Kit
320291 -20°C	UNSATURATED DERMATO/HYALURO-DISACCHARIDE REFERENCE KIT See Standard Disaccharide Kits in the Immunobiologicals section for details.	1 Kit
NEW 321831 -20°C	PROTEIN KINASE C ISOZYME KIT Anti-PKC Mix Clones: MC-1a (type I); MC-2a (type II); MC-3a (type III) Isotype: IgG _{2b} (I); IgG _{2a} (II); IgG ₁ (III) Conc/Titer: 1:20-1:100 Applications: immunoblotting; immunohistochemistry This monoclonal mix is reactive against PKC- ψ (type I), PKC- β (type II) and PKC- α (type III). It is recommended that each lab determine the optimum working dilution for a particular assay. Ref.: Hidaka, H., et al., J. Biol. Chem., 263 , 4523 (1988). 2. Huang, K.P., et al., Proc. Natl. Acad. Sci. USA, 83 8535 (1986).	1 vial
678201 0-5°C	SILVER ENHANCING KIT For Light and Electron Microscopy This Immu-Mark™ silver enhancing kit is used to enlarge gold particles <i>in situ</i> to give an intense brown-black stain of tissues and cells. The final silver enhancing step in IGSS is critical in achieving high sensitivity when visualizing antigens without loss of resolution. The kit is easy to use and comes with a simple-to-follow protocol. All components are formulated to provide intense rapid staining with low background. The resulting signal is permanent and more sensitive than conventional indirect enzyme labeling.	2 x 15 ml
678211 0-5°C	SILVER ENHANCING KIT For Immunoblotting This Immu-Mark™ silver enhancing kit is used for amplifying the signal from gold particles attached to proteins or antigens immobilized on membranes. By intensifying the gold probe signal, protein levels in the 1 picogram range are easily detectable. The kit is easy-to-use and comes with a simple-to-follow protocol. The kit reagents are formulated to provide rapid, intense staining with low background.	2x250 ml



Research Kits

Electrophoresis Kits and Accessories

ICN's specially packaged electrophoretic kits contain the necessary reagents to prepare the appropriate polyacrylamide gels. Researchers may now explore different electrophoretic procedures both conveniently and economically. A complete set of instructions is supplied with each kit.

PAGE Kits

CATALOG NUMBER

800650 ACRYLGEL™ PAGE STARTER KIT 1 Kit

This convenient starter kit contains everything required for preparing analytical gels. It includes our Ultra Pure Acrylamide, for the preparation of fluorescence-free, U.V. scannable gels.

Kit contents:

Acrylamide, <i>Ultra Pure</i> , 99.9%	100 g
N,N'-Methylene-bis-acrylamide	10 g
Ammonium Persulfate	5 g
TEMED	5 g

Related Kits: SDS-Acrylgel PAGE Starter Kit, Photogel PAGE Starter Kit, Solugel PAGE Starter Kit, Sulfagel PAGE Starter Kit.

800651 SDS-ACRYLGEL™ PAGE STARTER KIT 1 Kit

This convenient starter gel kit contains everything necessary for preparation of analytical gels and includes Sodium Dodecyl Sulfate (SDS) as a protein solubilizer and denaturant.

Kit contents:

Acrylamide, <i>Ultra Pure</i> , 99.9%	100 g
N,N'-Methylene-bis-acrylamide	10 g
Ammonium Persulfate	5 g
TEMED	5 g
Sodium Dodecyl Sulfate	25 g
Coomassie Brilliant Blue R-250	10 g
2-Mercaptoethanol	25 g

800652 PHOTOGEL™ PAGE STARTER KIT 1 Kit

This convenient starter acrylamide kit contains riboflavin. Riboflavin and UV light are used in place of ammonium persulfate for photochemical polymerization.

Kit contents:

Acrylamide, <i>Ultra Pure</i> , 99.9%	100 g
N,N'-Methylene-bis-acrylamide	10 g
TEMED	5 g
Riboflavin	25 g

Related kits: Acrylgel PAGE Starter Kit, SDS-Acrylgel PAGE Starter Kit, Solugel PAGE Starter Kit, Sulfagel PAGE Starter Kit

800653 SOLUGEL™ PAGE STARTER KIT 1 Kit

This convenient starter gel kit allows formation of a readily solubilized gel by substituting N,N'-Diallyltartardiamide for N,N'-Methylene-bis-acrylamide as the cross-linking agent. Useful for forming gels for liquid scintillation counting and recovery of separated protein bands:

Kit contents:

Acrylamide, <i>Ultra Pure</i> , 99.9%	100 g
N,N'-Diallyltartardiamide	10 g
Ammonium Persulfate	5 g
TEMED	5 g
Periodic Acid	10 g
Bromophenol Blue	10 g

800654 SULFAGEL™ PAGE STARTER KIT 1 Kit

This convenient starter gel kit substitutes N,N'-Cystamine-bis-acrylamide (BAC) for N,N'-Methylene-bis-acrylamide as the cross-linking agent. BAC is a disulfide containing analog of Bis, and the disulfide bonds formed on polymerization become a part of the crosslinkage. The BAC-crosslinked gel may be redissolved by adding the sulfide bond reducing agent, 2-Mercaptoethanol (or dithiothreitol)

Kit contents:

Acrylamide, <i>Ultra Pure</i> , 99.9%	100 g
N,N'-Cystamine-bis-acrylamide	5 g
Ammonium Persulfate	5 g
TEMED	5 g
2-Mercaptoethanol	25 g

Related kits: Acrylgel PAGE Starter Kit, SDS-Acrylgel PAGE Starter Kit, Photogel PAGE Starter Kit, Solugel PAGE Starter Kit



Related Kits

CATALOG NUMBER

801672 AGAROSE KIT 1 Kit

A convenient kit for sampling our various agaroses for electrophoresis. Each kit contains 5 gm of the following:

- Agarose, Electrophoresis Grade
- Agarose, Genetic Technology Grade
- Agarose, Low Gel Temperature
- Agarose, High Gel Temperature
- Agarose for Isoelectric Focusing

821655 CAP™-GEL TRIS-BORATE 5-GEL KIT 1 each

Contains sample buffer, TBE running buffer, Coomassie Colloidal Stain, and 5 TBE CAP™-Gels of choice.

821656 CAP™-GEL TRIS-SDS 5-GEL KIT 1 each

Contains sample buffer, Tris-SDS running buffer, Coomassie Colloidal Stain, and 5 Tris-SDS CAP™-Gels of choice.

Calibration Kits

CATALOG NUMBER

990515 MOLECULAR WEIGHT MARKER KIT 1 Kit

25 mg each of 8 proteins
Enzyme-free protein electrophoresis grade used for calibrating gel electrophoresis

Protein	Sub-Unit MW
Bacitracin	1,450
Cytochrome C (Horseheart)	13,000
Myoglobin (Horseheart)	18,000
Chymotrypsinogen A	24,000
Ovalbumin	45,000
Bovine Serum Albumin	67,000
Gamma Globulin (Human)	160,000
Apoferitin	480,000

990822 MOLECULAR WEIGHT MARKER KIT 1 Kit

100 mg each of 8 proteins
Enzyme-free protein electrophoresis grade used for calibrating gel electrophoresis

Protein	Sub-Unit MW
Bacitracin	1,450
Cytochrome C (Horseheart)	13,000
Myoglobin (Horseheart)	18,000
Chymotrypsinogen A	24,000
Ovalbumin	45,000
Bovine Serum Albumin	67,000
Gamma Globulin (Human)	160,000
Apoferitin	480,000

Rapid-Ag-Stain™

- **Rapid** - gels may be stained and visualized in less than one hour.
- **Sensitive** - proteins stain from 50-125X more sensitive than coomassie*.
- **Easy-to-use** - simple preparation and procedures.
- **Versatile** - for protein, RNA and DNA staining and 2-D electrophoresis; may be used for double-staining with coomassie* or restaining.
- **Convenient** - no heavy metals with regulatory controls.
- **Economical** - enough reagent for 25 slab gels.
- **Safer** - no regulated reagents incorporated.

ICN's silver stain kit offers fast staining times and improved sensitivity. For detecting proteins and nucleic acids isolated by PAGE, Rapid-Ag-Stain™ is more sensitive than both coomassie* and ethidium bromide. Additionally, coomassie* stained gels may be restained or "double-stained" for greater sensitivity. It is ideally suited for detecting proteins and nucleic acids in PAGE and SDS-polyacrylamide slab gel electrophoresis, detecting trace polypeptides in complex samples, replacing autoradiography imaging, and verifying transfer efficiency. Storage is 0-5°C in a dark place. One kit contains sufficient reagents for 25 slab gels.

Kit Contents: staining solutions A, B, and C, developer A and B, and rinsing solution.

800665

1 kit



Silver Stain Quick Kit

A rapid, sensitive staining kit consisting of 100 ml of 10X silver stain oxidizer, 100 ml of 10X concentrated silver stain reagent and 125 ml of developer.

821583

1 kit

Precast Gels

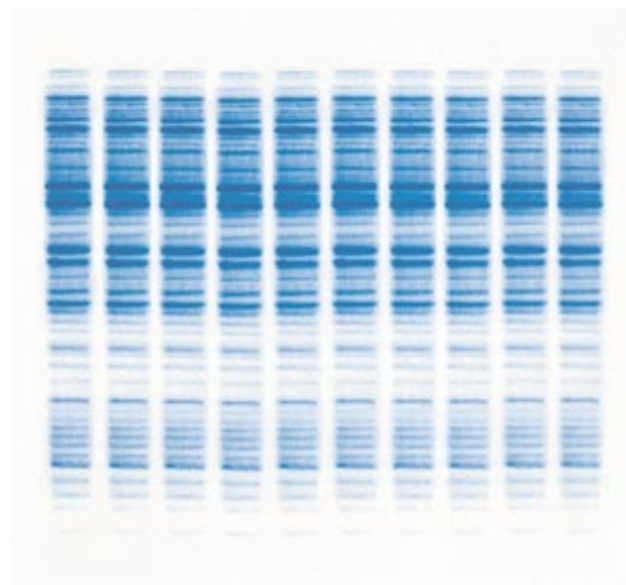
ICN CAP™ -Gels

CAP™-Gels are unlike all other precast polyacrylamide gradient gels. Traditional gradient gels are gravity-poured, utilizing different concentrations of acrylamide to form blocks of stacked gradients. CAP™-Gels employ Controlled Acrylamide Polymerization (CAP™), a unique process which actually controls the acrylamide polymer length, and thus, the pore size.

ICN CAP™ -Gel Benefits-

- Controlled Acrylamide Polymerization (CAP™) technology ensures precise, narrow gradients.
- Very high resolution- up to 2.5 times greater than other mini-gels.
- Ready-To-Use
- Exceptionally clear lane markings due to an innovative, patented comb system.
- Universal mini-gel cassettes fit any existing apparatus.
- Accurate, consistent and reproducible results.
- Cost efficient and time effective.
- Superior separations, crisper blots, darker staining of faint bands.

ICN CAP™ -Gels are available in two cassette sizes: 8x10 cm and 10x10 cm. They will fit into all existing mini-gel running modules, regardless of the manufacturer. Additionally, CAP™ -Gels are available in either a Tris-Glycine (SDS denaturing) buffer or a TBE native buffer.





Research Kits

CAP™ -Gel Tris/Borate/EDTA Minismall

(8x10 cm)

Cat. No.	Percent Acrylamide	Qty.
821584	3-12	5/pk
821585		10/pk
821586	3-27	5/pk
821587		10/pk
821588	4-20	5/pk
821589		10/pk
821590	10-20	5/pk
821591		10/pk
821592	17-27	5/pk
821593		10/pk
821594	6	5/pk
821595		10/pk
821596	10	5/pk
821597		10/pk
821598	16	5/pk
821599		10/pk

CAP™ -Gel Tris/SDS Minismall

(8x10 cm)

Cat. No.	Percent Acrylamide	Qty.
821601	3-12	5/pk
821602		10/pk
821603	3-27	5/pk
821604		10/pk
821605	4-20	5/pk
821606		10/pk
821607	10-20	5/pk
821608		10/pk
821609	17-27	5/pk
821610		10/pk
821611	6	5/pk
821612		10/pk
821613	10	5/pk
821614		10/pk
821615	16	5/pk
821617		10/pk

CAP™ -Gel Tris/Borate/EDTA Minitall

(10x10 cm)

Cat. No.	Percent Acrylamide	Qty.
821618	3-12	5/pk
821619		10/pk
821620	3-27	5/pk
821621		10/pk
821622	4-20	5/pk
821623		10/pk
821625	10-20	5/pk
821626		10/pk
821627	17-27	5/pk
821628		10/pk
821629	6	5/pk
821630		10/pk
821631	10	5/pk
821632		10/pk
821633	16	5/pk
821634		10/pk

CAP™ -Gel Tris/SDS Minitall

(10x10 cm)

Cat. No.	Percent Acrylamide	Qty.
821635	3-12	5/pk
821637		10/pk
821638	3-27	5/pk
821639		10/pk
821640	4-20	5/pk
821641		10/pk
821642	10-20	5/pk
821643		10/pk
821644	17-27	5/pk
821645		10/pk
821646	6	5/pk
821647		10/pk
821648	10	5/pk
821649		10/pk
821650	16	5/pk
821651		10/pk

Research Kits

CAP™-Gel Plus

The next generation of precast mini-polyacrylamide gels!

ICN's CAP™-Gel Plus utilizes **Controlled Acrylamide Polymerization** technology resulting in superb precast gels with very precise pore sizes and extremely consistent reproducibility, ensuring very high-resolution separations. Additionally, CAP™-Gel Plus gels include a **poured-in comb** designed to provide 12 uniform sample wells and a thin, low-concentration acrylamide overlayer which acts as a built-in stacking gel.

CAP™-Gel Plus are available in both 8 x 10 cm and 10 x 10 cm glass cassettes, designed to fit all existing gel-running apparatus. They are also available with **Tris-Tricine** and **Tris-HCl** buffer systems. Gels with Tris-Tricine buffer are useful in separating low molecular weight proteins and peptides, while gels with Tris-HCl buffer are suitable for separating proteins and nucleic acids. A variety of single-strength concentrations, as well as gradients, are available. All gels are available in individual packs of 1 gel or individually wrapped in a 5-gel package.

CAP™-Gel Plus Tris-HCl

(8 x 10 cm)

Cat. No.	Percent Acrylamide	Qty.
821763	5	1 Pack
821764	5	5 Pack
821767	7.5	1 Pack
821768	7.5	5 Pack
821771	10	1 Pack
821772	10	5 Pack
821775	12.5	1 Pack
821776	12.5	5 Pack
821779	15	1 Pack
821780	15	5 Pack
821783	2-15	1 Pack
821784	2-15	5 Pack
821787	4-20	1 Pack
821788	4-20	5 Pack
821791	10-18	1 Pack
821792	10-18	5 Pack
821795	10-27	1 Pack
821796	10-27	5 Pack
821799	17-27	1 Pack
821800	17-27	5 Pack

CAP™-Gel Plus Tris-HCl

(10 x 10 cm)

Cat. No.	Percent Acrylamide	Qty.
821765	5	1 Pack
821766	5	5 Pack
821769	7.5	1 Pack
821770	7.5	5 Pack
821773	10	1 Pack
821774	10	5 Pack
821777	12.5	1 Pack
821778	12.5	5 Pack
821781	15	1 Pack
821782	15	5 Pack
821785	2-15	1 Pack
821786	2-15	5 Pack
821789	4-20	1 Pack
821790	4-20	5 Pack
821793	10-18	1 Pack
821794	10-18	5 Pack
821797	10-27	1 Pack
821798	10-27	5 Pack
821801	17-27	1 Pack
821802	17-27	5 Pack

CAP™-Gel Plus Tris-Tricine

(8 x 10 cm)

Cat. No.	Percent Acrylamide	Qty.
821759	10-20	1 Pack
821760	10-20	5 Pack

CAP™-Gel Plus Tris-Tricine

(10 x 10 cm)

Cat. No.	Percent Acrylamide	Qty.
821761	10-20	1 Pack
821762	10-20	5 Pack





Research Kits

Molecular Biology Kits

DNA Labeling Kits

ICN offers three systems for radiolabeling DNA using the Klenow fragment of DNA Polymerase I. Each system has been configured for the greatest flexibility and may be used in combination with one or more radiolabeled nucleotides.

- Typical specific activity of labeled probes is $>1 \times 10^9$ dpm/ μ g DNA.
- Convenient, one-step procedure for simultaneous denaturation of DNA and annealing of random primers.
- Polymerase reaction requires less than 20 minutes at 37°C.
- Two different "cold" deoxynucleotide mixes are included in each system and optimized for use with radiolabeled ATP or CTP.
- A complete dNTP mix is included in Version 1.1; four different dNTP solutions are supplied in Version 1.2.
- In kit Version 2.0, the polymerase reaction requires only 5 minutes due to more efficient annealing of the decanucleotide random primers.

DNA Labeling Kit, Version 1.1

Version 1.1 is designed for labeling DNA to high specific activity. The basis of the kit is the random primer method developed by Feinberg and Vogelstein. Random sequence primers are annealed to denatured template DNA, and complementary strands are synthesized with the Klenow fragment in the presence of labeled dNTP's. The length of the fragment to be labeled does not influence the reaction. The result is a uniform degree of labeling along the entire length of the input DNA. The maximum yield of labeled product occurs in 15 minutes. Labeled DNA probes may be used in any hybridization experiments. Kits are tested in a labeling reaction of λ DNA/Hind III fragments.

Components: Klenow Fragment, Hexanucleotide in Reaction Buffer, Mix A, Mix C, dNTP Mix, Control Template, Deionized Water, Complete Protocol.

834010	10 reactions
834030	30 reactions

DNA Labeling Kit, Version 1.2

This kit is an extended variation of Version 1.1. DNA may be labeled with either a single radiolabeled dNTP or two different dNTP's simultaneously. The choice of labels is not restricted because separate solutions of each dNTP are included. This approach can form labeled DNA probes with extremely high specific activity.

Components: Klenow Fragment, Hexanucleotide in Reaction Buffer, Mix A, Mix C, dNTP Mix, dATP Solution, dCTP Solution, dGTP Solution, dTTP Solution, Control Template, Deionized Water, Complete Protocol.

878010	10 reactions
878030	30 reactions

DNA Labeling Kit, Version 2.0

Version 2.0 offers rapid and convenient synthesis of labeled DNA probes featuring high specific activity. The Klenow fragment synthesizes the complementary strand from the 3'-ends of random decanucleotides in the presence of dNTPs. The reaction requires only 5 minutes, and it is independent of DNA template concentration or the length. Any radiolabeled or non-radiolabeled dNTP can be used.

Components: Klenow Fragment, Decanucleotide in Reaction Buffer, Mix A, Mix C, dNTP Mix, Control Template, Deionized Water, Complete Protocol.

845010	10 reactions
845030	30 reactions

DNA End-labeling Kits

These two comprehensive systems will rapidly and efficiently radiolabel 5'-ends of DNA or synthetic oligonucleotides through direct or exchange kinase reactions.

Applications:

- Labeling DNA or oligonucleotide markers for gel electrophoresis.
- Labeling primers for sequencing or amplification methods per Maxam-Gilbert and Sanger.
- Labeling probes for any DNA hybridization experiment.
- Phosphorylation of oligonucleotides as substrates for DNA ligases.

DNA 5'-End Labeling Kit

This complete system is designed for simple and rapid labeling of both DNA fragments and synthetic oligonucleotides. T4 polynucleotide kinase catalyzes the transfer of the γ -phosphate of [γ - 32 P]-ATP to the 5'-end of DNA or oligonucleotide. DNA fragments may be kinased with a radioactive phosphate by exchange reaction or may be dephosphorylated with alkaline phosphatase and end-labeled by direct reaction. Up to 10^6 - 10^7 dpm/pmol of DNA can be labeled.

Components: T4 Polynucleotide Kinase, Alkaline Phosphatase (calf intestine), Buffer A, Buffer B, Buffer D, PEG 6000 Solution, Control DNA, EDTA Solution, Deionized Water, Complete Protocol.

856010	10 reactions
856030	30 reactions

Synthetic Oligonucleotide 5'-End Labeling Kit

A complete system designed to phosphorylate or label 5'-ends of synthetic oligonucleotides. T4 polynucleotide kinase catalyzes the transfer of the γ -phosphate of [γ - 32 P]-ATP to the 5'-OH end of oligonucleotides or DNA. The synthetic oligonucleotides may be kinased with radioactive phosphate, and the product may be used as labeled probes or phosphorylated with non-radioactive ATP provided. A synthetic control oligonucleotide (14-mer) is included.

Components: T4 Polynucleotide Kinase, 10X Reaction Buffer, ATP Solution, Control Oligonucleotide, Deionized Water, Complete Protocol.

867010	10 reactions
867030	30 reactions

DNA Purification Kits

ICN's complete plasmid and linear DNA purifying/isolation systems save time, labor and expense over traditional procedures.

CLEANaprep™ Plasmid DNA Purification Kit

- Yields 20 µg of purified plasmid DNA.
- No harmful or toxic reagents- no phenol or phenol/chloroform.
- Rapid, inexpensive, simple-to-use.
- Resulting DNA suited for sequencing or transformations.

ICN's CLEANaprep™ Kit allows high yields of purified DNA from as little as 2 ml of culture supernatant. The unique spin filter binds plasmid DNA. After microcentrifuging away the unbound genomic DNA and protein, the bound plasmid DNA is readily eluted from the filter and immediately ready for sequencing or transformation procedures. Additionally, the purified plasmid DNA may be ligated, if required, by restriction enzymes. A complete protocol is included with each kit.

7410101	25 preps
7410102	100 preps
7410103	250 preps



CLEANaprep II™ DNA Isolation Kit

- Versatile for all DNA isolation techniques.
- Isolates RNA-free plasmid DNA without using ribonucleases.
- Removes unincorporated nucleotides from radiolabeled DNA.
- Minute purification of restriction enzyme digests.
- No phenol or chloroform extractions required.

ICN's CLEANaprep II™ kit purifies up to 15 µg of single-stranded DNA from samples with different contaminants including proteins, oligonucleotides, RNA and double-stranded DNA. The purified product may be used in sequencing, restriction enzyme digestion, PCR, ligation, in vitro transcription and transformation procedures.

This kit isolates both plasmid and linear DNA from various sources- RNA-free plasmid DNA from E. coli; linear DNA from enzymatic reactions; DNA fragments from agarose. CLEANaprep II™ also removes unincorporated radioactive and non-radioactive nucleotides and primers from DNA in random-primed labeling reactions. Typically, the CLEANaprep II™ procedure requires only 10-30 minutes depending on the specific application. A complete protocol is included.

821740	50 preps
--------	----------

Bac-UP™ Baculovirus Expression System

ICN's Bac-UP Baculovirus Expression System features specially designed vectors for recombinant protein expression at extremely high levels. The baculovirus *Autographica californica* nuclear polyhedrosis virus (AcMNPV) is used to produce target proteins in cultures of insect cells. Plasmid vectors are used to clone the target gene and transfer it to the baculovirus genome by recombination inside the insect host cells. The available transfer vectors offer the largest multiple cloning sites while being the most compact.

Kit Contents: 2 Transfer vectors for high-level expression of cloned genes, Bsu36 I viral DNA digest, Transfection reagent, IPLB-Sf21 Spodoptera frugiperda cells, Positive control virus stock, Negative control AcMNPV wild-type virus, Bac1 sequencing/PCR primer, Bac2 sequencing/PCR primer, Positive control plasmid pBac-up8-GUS, Complete protocol.

Bac-UP™ System

The complete kit includes sufficient components to perform 5 transfections.

0920200	1 kit
---------	-------

CATALOG NUMBER

0910400 -20°C	pAcUW31 TRANSFER VECTOR Transfer vector for high-level expression of cloned genes under the control of two potent AcMNPV polyhedrin promoters. Designed for high level expression of two different genes in the same cell. <i>Complete construct information is available upon request.</i>	15 µg
------------------	---	-------

0910100 -20°C	BAC-UP6 VIRAL DNA Derivative of AcMNPV that facilitates the production of recombinant viral expression vectors from AcMNPV transfer vectors. A transfection reagent is provided with Bac-Up6 DNA for efficient co-transfections.	15 µg
------------------	---	-------

0910200 -20°C	pBAC-UP8 Transfer vector for high-level expression of cloned genes under the control of the potent AcMNPV polyhedrin promoter. <i>Complete construct information is available upon request.</i>	15 µg
------------------	--	-------

0910300 -20°C	pBAC-UP9 Transfer vector for high-level expression of cloned genes under the control of the potent AcMNPV polyhedrin promoter. <i>Complete construct information is available upon request.</i>	15 µg
------------------	--	-------

0921000 -20°C	BAC-UP VIRUS STOCK	2 ml
------------------	---------------------------	------

0921100 -20°C	AcMNPV C6 Wild Type Virus	2 ml
------------------	----------------------------------	------



Research Kits

Miscellaneous Kits

Amino Acid Kit 22

This kit contains 1 gram each of the following 22 amino acids:

DL- α -Alanine	L-Cystine	DL-Norleucine
β -Alanine	L-Glutamic Acid	DL-Norvaline
Aminoacetic Acid	L-Histidine	DL-Phenylalanine
L-Arginine HCl	DL-Isoleucine	L-Proline
L-Asparagine	DL-Leucine	DL-Serine
DL-Aspartic Acid	DL-Lysine HCl	DL-Threonine
L-Cysteine HCl	DL-Methionine	DL-Tyrosine
		DL-Valine

100590

1 kit

Amino Acid Kit 50

This kit contains each of the following 50 amino acids in the amount specified:

N-Acetyl-DL-alanine (100 g)	3,5-Diiodo-L-Tyrosine (10 g)	DL-Norleucine (10 g)
DL- α -Alanine (25 g)	L-Glutamic Acid (100 g)	DL-Norvaline (10 g)
β -Alanine (100 g)	L-Glutamic Acid HCl (100 g)	DL-Ornithine HCl (1 g)
Aminoacetic Acid (100 g)	DL-Glutamic Acid (10 g)	DL-Phenylalanine (10 g)
DL- α -Amino-n-butyric Acid (25 g)	Glycine Ethyl Ester (100 g)	L-Phenylalanine (10 g)
L-Arginine (10 g)	DL-Histidine HCl (5 g)	L-Proline (5 g)
DL-Asparagine (100 g)	L-Histidine (5 g)	Sarcosine (10 g)
L-Asparagine (100 g)	L-Histidine HCl (5 g)	Sarcosine HCl (10 g)
DL-Aspartic Acid (10 g)	DL-Homocystine (5 g)	DL-Serine (10 g)
L-Aspartic Acid (5 g)	Hydroxy-L-proline (1 g)	Taurine (1 g)
Betaine Monohydrate (25 g)	DL-Isoleucine (5 g)	DL-Threonine (1 g)
Creatinine Zinc Chloride (10 g)	DL-Leucine (25 g)	L-Tryptophan (1 g)
Creatinine (10 g)	L-Leucine (25 g)	DL-Tryptophan (5 g)
Creatinine C.P. (10 g)	DL-Lysine HCl (10 g)	L-Tyrosine (25 g)
L-Cysteine (5 g)	L-Lysine 2HCl (25 g)	DL-Tyrosine (25 g)
L-Cysteine HCl (10 g)	DL-Methionine (100 g)	DL-Valine (25 g)
L-Cysteine (25 g)	L-Methionine (10 g)	

100599

1 kit

"L" Amino Acid Kit

This kit contains 1 gram each of the following 20 natural "L" amino acids:

L-Alanine	L-Glutamic Acid HCl	L-Phenylalanine
L-Arginine HCl	Glycine	L-Proline
L-Asparagine	L-Histidine HCl	L-Serine
L-Aspartic Acid	L-Isoleucine	L-Threonine
L-Cysteine HCl	L-Leucine	L-Tryptophan
L-Cystine	L-Lysine 2HCl	L-Tyrosine
	L-Methionine	L-Valine

100586

1 kit

"DL" Amino Acid Kit

This kit contains 1 gram each of the following 24 "DL" amino acids:

DL- α -Alanine	DL-Ethionine	DL-Norvaline
DL- α -Amino-n-butyric Acid	DL-Glutamic Acid	DL-Ornithine HCl
DL-Arginine HCl	DL-Histidine HCl	DL-Phenylalanine
DL-Asparagine	DL-Isoleucine	DL-Proline
DL-Aspartic Acid	DL-Leucine	DL-Threonine
DL-Citrulline	DL-Lysine 2HCl	DL-Tryptophan
DL-Cystine	DL-Methionine	DL-Tyrosine
DL-Dopamine	DL-Norleucine	DL-Valine

100577

1 kit

Buffer Kit

This 20 buffer kit contains each of the following buffers in the amount specified:

ACES (1 g)	Glycylglycine (5 g)	Tricine (5 g)
BES (5 g)	HEPES (5 g)	Triethanolamine (5 g)
Bicine (5 g)	HEPPS (5 g)	TRIS (50 g)
BIS-TRIS (5 g)	MOPS (5 g)	TRIS Carbonate (5 g)
CAPS (5 g)	PIPES (5 g)	TRIS Hemisulfate (5 g)
Glycinamide HCl (5 g)	TAPS (5 g)	TRIS HCl (5 g)
	TES (5 g)	Na ₂ HPO ₄ (50 g)

101158

1 kit

Carbohydrate Kit

This 31 carbohydrate kit contains each of the following in the amount specified:

Adonitol (1 g)	L-Erythritol (5 g)	D(+)-Melibiose (5 g)
Arabic Acid (25 g)	D(+)-Galactose (100 g)	D(+)-Melezitose (5 g)
D(-)-Arabinose (10 g)	L-Inositol (100 g)	Pectin, citrus (100 g)
L(-)-Arabinose (10 g)	Inulin (25 g)	L(+)-Rhamnose (25 g)
L(-)-Arabitol (1 g)	D(+)-Lactose (500 g)	D(-)-Ribose (5 g)
D(+)-Cellobiose (10 g)	D(-)-Levulose (100 g)	Salicin (5 g)
Cellobiose Octaacetate (10 g)	D(-)-Lyxose (1 g)	D(-)-Sorbitol Hydrate (100 g)
Dextrin (100 g)	D(+)-Maltose (100 g)	L(-)-Sorbitose (50 g)
D(+)-Dextrose (1 kg)	D(-)-Mannitol (500 g)	D(+)-Trehalose (5 g)
Dulcitol (10 g)	D(+)-Mannose (25 g)	D(+)-Turannose (1 g)
		D(+)-Xylose (25 g)

103609

1 kit

DAB Metal Enhanced Kit

The metal ions results in a far more dense stain than 3,3'-diaminobenzidine alone, forming a localized deep blue-black precipitate.

980561

1 kit

Fluorescein Ester Kit

This 6 item kit contains 1 gram of each of the following:

Fluorescein Diacetate	Fluorescein Dicaproate	Fluorescein Dilaurate
Fluorescein Dibutylrate	Fluorescein Dicaprylate	Fluorescein Dipropionate

101721

1 kit

Fluorescent Labeling Kit

This 7 item kit contains 100 milligrams of each of the following:

5-Dimethylamino-1-naphthalenesulfonic Acid	Fluorescein Isothiocyanate on 10% Celite
Fluorescein Amine (fract. I or II)	Rhodamine B Isothiocyanate
Fluorescein Isothiocyanate	Rhodamine B Isothiocyanate on 10% Celite
	Lissamine Rhodamine B-200 on 5% Celite

103612

1 kit

Mitogen Kit

ICN's Endokit™ expands your mitogen use parameter by combining sample quantities of high quality standard endotoxins. Each kit contains 1 mg of the following five endotoxin preparations:

S. minnesota, wild-type	S. typhimurium, wild-type	E. coli, 0111:B4
S. enteritidis	S. typhimurium, re-mutant G30/L22	

151700

1 kit

Plant Growth Hormones Kit

This 15 hormone kit contains the specified amount of each item.

N-6-Benzyladenine (200 mg)	β -(2-Furyl)Acrylic Acid (1 g)	Kinetin (1 g)
o-Chlorophenoxyacetic Acid (1 g)	3-Indole Butyric Acid (1 g)	α -Naphthalene Acetamide (1 g)
p-Chlorophenoxyacetic Acid (1 g)	3-Indole Propionic Acid (1 g)	Naphthalene Acetic Acid (1 g)
p-Coumaric Acid (1 g)	Maleic Acid Hydrazide (1 g)	Gibberellic Acid 10% (1 g)
α -p-Chlorophenoxypropionic Acid (1 g)		
2,4,5-Trichlorophenoxyacetic Acid (1 g)		
2,4,5-Trichlorophenoxypropionic Acid (1 g)		

103607

1 kit

pH Indicator Kit

This kit contains 1 gram each of 9 different indicators.

Bromocresol Green	Bromothymol Blue	Methyl Red, Na (5 g)
Bromocresol Purple	Cresol Red	Phenol Red, Na
Bromophenol Blue	m-Cresol Red	Thymol blue

103610 1 kit

Sulfa Kit

This kit contains 10 grams each of the following 15 sulfer containing compounds.

Azosulfamide	Sulfabenzamide	Sulfanilamide
Phthalylsulfacetamide	Sulfaguanidine	Sulfapyridine
Succinyl Sulfathiazole	Sulfamerazine	Sulfathiazole
Sulfacetamide	Sulfamethazine	Sulfisoxazole
Sulfadiazine	Sulfaminouracil	
p-Aminomethylbenzenesulfonamide		

102980 1 kit

Vitamin Kit

This kit contains the following 14 vitamins in the amounts specified.

Ascorbic Acid (25 g)	Choline Chloride (25 g)	Thiamine HCl (5 g)
Biotin (100 mg)	Folic Acid (1 g)	DL-Tocopherol (5 g)
Calciferol (1 g)	I-Inositol 2H ₂ O (25 g)	Vitamin A Acetate (100 mg)
DL-Calcium Pantothenate (5 g)	Niacinamide (25 g)	Vitamin B6 (1 g)
	Riboflavin (5 g)	Vitamin B12 (10 mg)

103615 1 kit

Protease Inhibitor Cocktail Kit

This convenient kit contains the following four protease inhibitors pre-weighed in the specified amounts and packaged in vials. They prepare 100 ml of inhibitor cocktail.

AEBSF	40 mg
EDTA-Na ₂	100 mg
Leupeptin	0.1 mg
Pepstatin A	0.1 mg

Protease Inhibitor Cocktail Kit

The final solution is stable from 60-90 days when stored at 5°C. Do not freeze the prepared solution. Please request a copy of ICN's Protease Inhibitor Brochure!

158837 1 kit

Mycoplasma Stain Kit

For the detection of mycoplasma contamination in cell culture!

- Reliable
- Versatile
- Rapid
- Economical

ICN's Mycoplasma Stain Kit detects mycoplasma and other prokaryotic organisms in cell culture by in situ hybridization principles. It utilizes DNA fluorochrome staining technology with Hoechst stain 33258 for both rapid and highly sensitive performance. Non-nuclear staining results in contaminants boldly appearing against a black background. The nature of the contaminant is then analyzed by its morphology, size and relationship to the cultured cells.

Mycoplasma Stain Kit

A rapid, reliable kit requiring less than two hours. Each kit performs 100 tests and can be used to detect mycoplasma, bacteria, yeast and fungi.

3030000 1 kit

Toxicity Test Kits

CATALOG NUMBER

3021000 **IN VITRO TOXICITY TESTING KIT** 1 kit
0-5°C **Neutral Red Uptake**
 Contains sufficient material for 1,000 microplate based tests. Detailed test procedures are available upon request.

3022000 **IN VITRO TOXICITY TESTING KIT** 1 kit
0-5°C **Neutral Red Release Assay**
 Contains sufficient material for 1,000 microplate based tests. Detailed test procedures are available upon request.

3023000 **IN VITRO TOXICITY TESTING KIT** 1 kit
0-5°C **MTT Based**
 Contains sufficient material for 1,000 microplate based tests. Detailed test procedures are available upon request.

3024000 **IN VITRO TOXICITY TESTING KIT** 1 kit
0-5°C **Kenacid Blue**
 Contains sufficient material for 1,000 microplate based tests. Detailed test procedures are available upon request.

3025000 **IN VITRO TOXICITY TESTING KIT** 1 kit
0-5°C **Acid-Phosphatase Based**
 Contains sufficient material for 1,000 microplate based tests. Detailed test procedures are available upon request.

Endotoxin Detection Systems

CATALOG NUMBER

3070000 **ENDOTOXIN DETECTION KIT** 20 tests
0-5°C Based on Limulus Amebocyte Lysate (LAL) assay
 • Excellent Reproducibility
 • Simple-to-Use
 • Clear Determination- (+) or (-)
 • Economical
 • Sensitive
 The Endotoxin Detection Kit is a complete 20 test kit. Sensitivity level: 0.06 ng/ml. The contents include:
 22 Single Test Vials Lysate
 5 Inhibition Control Vials
 1 Positive Control Vial
 1 LAL Reagent Water (<0.005 EU/ml)
 28 Pipettes
 1 Sheet of Labels.

NEW 3070200 **ENDOTOXIN DETECTION KIT** 20 tests
0-5°C Based on Limulus Amebocyte Lysate (LAL) assay
 • Excellent Reproducibility
 • Simple-to-Use
 • Clear Determination- (+) or (-)
 • Economical
 • Sensitive
 The Endotoxin Detection Kit is a complete 20 test kit. Sensitivity level: 0.125 ng/ml. The contents include:
 22 Single Test Vials Lysate
 5 Inhibition Control Vials
 1 Positive Control Vial
 1 LAL Reagent Water (<0.005 EU/ml)
 28 Pipettes
 1 Sheet of Labels.

3070100 **ENDOTOXIN CONTROL KIT** 1 kit
0-5°C Additional controls for use with the Endotoxin Detection Kit (cat. no. 30-700-00). The kit contains:
 5 Positive Control Vials
 5 Negative Control Vials.